

PROMOVE

DEMOLITION EQUIPMENT

HYDRAULIC BREAKERS



***LONG-LASTING
BREAKING POWER***

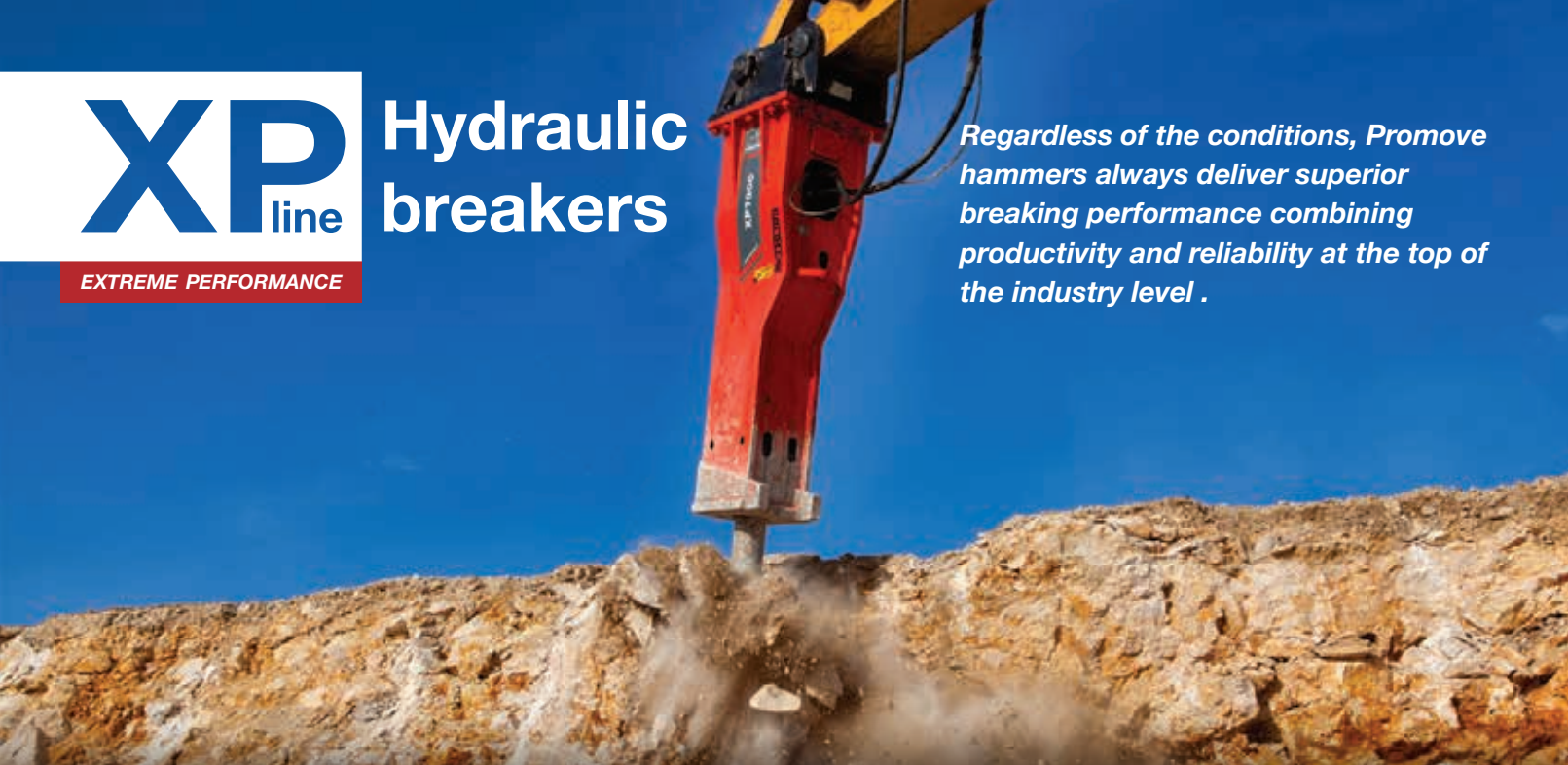
XP	HYDRAULIC BREAKER	4
	HEAVY RANGE	8
	MEDIUM RANGE	10
	LIGHT RANGE	12
SH	FULLY HYDRAULIC BREAKER	17
TOOLS		20
OPTIONS		21
SPECIAL APPLICATIONS		22
CREDITS		26

The logo features the letters 'XP' in a large, bold, blue font, with the word 'line' in a smaller, blue font positioned to the right and slightly below the 'P'.

XP
line

EXTREME PERFORMANCE

Hydraulic breakers

A red hydraulic breaker attachment is shown in action, breaking through a large rock formation. The breaker is mounted on a yellow excavator arm. The background is a clear blue sky. The rock being broken is light brown and grey, with dust and debris being kicked up by the impact.

Regardless of the conditions, Promove hammers always deliver superior breaking performance combining productivity and reliability at the top of the industry level .

Hydraulic breakers are today's most versatile work tool.

A must in excavating foundations, demolition, trenching, quarrying, tunneling and road construction.

Our Hydraulic breakers match perfectly with all excavators on the market.

- *Excellent Impact Energy*
- *Durability*
- *Low maintenance: only two moving parts*
- *The Best raw materials*
- *Continuous innovation in technology backed by solid experience since 1989.*

The most well respected hammer on jobsites worldwide.



Reduced Vibrations

Avoiding damages to the arm of the excavator thanks to a larger top shock absorber

Silenced

Noise reducing case (standard)

Impact Energy Regulator

Easily regulate the impact energy range and speed of your blows

Superior Power to Weight Energy

With larger piston and tool diameter for a harder hit

Full Hardox®

Bottom case protection

Easy Setup with the Working Pressure Valve

Low-pressure N₂ Chamber

Improved impact energy at every strike

N₂ Valve

For fast and easy nitrogen check and refill

No more residual blows with the **Anti Blank Firing System**

XP
line

Hydraulic breakers / Medium-Heavy range



XP
line

Hydraulic breakers / Heavy range



XP7000



XP4500



XP3100



XP2400



XP2000

Couple with:



**TRACKED
EXCAVATOR**

	XP7000	XP4500	XP3100	XP2400	XP2000
Working Weight (kg)	6900	4380	3090	2350	1950
Carrier's Weight (min) Ton	70	45	30	24	22
Carrier's Weight (max) Ton	130	80	48	35	29
Total Height (mm)	4200	3800	3500	3200	3000
Tool Diameter (mm)	210	180	160	150	145
Useful length of standard tool (mm)	800	700	690	685	675
Oil flow min (l/min)	380	290	190	170	170
Oil flow max (l/min)	420	330	240	190	190
Working pressure min (bar)	180	180	180	180	180
Working pressure max (bar)	190	190	190	190	190
Blows per minute min (c/min)	239	249	233	307	307
Blows per minute max (c/min)	432	432	576	523	523
Max. hydraulic input power (KW)	133	105	76	60	60
Impact Energy MAX (Joule)	22370	16871	13112	7878	7878



XP1700



XP1500



XP1200



XP1000



XP800

Couple with:



**TRACKED
EXCAVATOR**



**WHEEL
EXCAVATOR**

	XP1700	XP1500	XP1200	XP1000	XP800
Working Weight (kg)	1700	1450	1200	1000	750
Carrier's Weight (min) Ton	19	16	14	12	9
Carrier's Weight (max) Ton	28	25	20	18	15
Total Height (mm)	2700	2600	2500	2300	2250
Tool Diameter (mm)	135	130	120	110	100
Useful length of standard tool (mm)	670	570	550	550	520
Oil flow min (l/min)	150	140	100	100	90
Oil flow max (l/min)	170	150	130	130	110
Working pressure min (bar)	170	170	165	165	165
Working pressure max (bar)	180	180	175	175	175
Blows per minute min (c/min)	371	332	339	339	358
Blows per minute max (c/min)	932	593	718	718	720
Max. hydraulic input power (KW)	51	45	38	38	32
Impact Energy MAX (Joule)	5526	5448	4496	4496	3602



Plug and Play **XP**
line

Hydraulic breakers / Light range

No initial setup
Overflow protection
Pressure peak protection

SMARTVALVE © (Patent Pending)

N₂ Valve

For fast and easy nitrogen check and refill

Superior Power to Weight Energy

With larger piston and tool diameter for a harder hit

High Resistance Tool

With special treated steel

Reduced Vibrations

Avoiding damages to the arm of the excavator thanks to a "larger top shock absorber"

Low-pressure N₂ Chamber

Improved impact energy at every strike

Smart Impact Blow

Auto-regulating impact energy and frequency depending on material hardness

Large Bottom Shock Absorber

Plug and Play **XP**
line

Hydraulic breakers / Light range

Features

*Precision Engineered
Fully Enclosed Casing
Only two Moving Parts*

*Gas Efficient System
Low Maintenance
Maximum Productivity*

Smart & Plug and Play



XP551



XP400



XP300



XP250



XP150



XP101



XP70



**WHEEL
EXCAVATOR**



**BACKHOE
LOADER**



**SKID STEER
LOADERS**



**COMPACT
EXCAVATORS**

	XP551	XP400	XP300	XP250	XP150	XP101	XP70
Working Weight (kg)	550	430	300	240	160	100	85
Carrier's Weight (min) Ton	6	5,5	4	3	1,8	1	0,8
Carrier's Weight (max) Ton	12	10	9	5	4	3	2
Total Height (mm)	1900	1620	1450	1350	1260	1098	1050
Tool Diameter (mm)	87	80	80	64	56	42	42
Useful length of standard tool (mm)	480	390	380	370	280	270	270
Oil flow min (l/min)	80	70	50	35	25	15	----
Oil flow max (l/min)	100	80	60	45	35	25	15
Working pressure min (bar)	130	120	110	120	120	100	----
Working pressure max (bar)	150	140	130	130	130	110	110
Blows per minute min (c/min)	693	521	552	701	731	526	526
Blows per minute max (c/min)	867	595	663	901	1024	838	838
Max. hydraulic input power (KW)	25	19	13	10	8	5	3
Impact Energy MAX (Joule)	1450	1440	946	559	417	350	210

Applications

Demolition & Recycling
Trenching
Road Construction & Maintenance
Foundation & Groundwork
Foundry Maintenance

Ideal for Renting

Special Applications:



PB version

features two-sided casings
with direct fit on the stick
through pins & bushings

Hydraulic breakers

Plug and Play

XP
line





SH

**Hydraulic
breakers**

Fully Hydraulic Line
this what made us an industry leader



P27 SH



P23 SH



P16 SH



P14 SH



P12 SH



P12 SB



P6 SB



P4 SH



P3 SH



**TRACKED
EXCAVATOR**



**WHEEL
EXCAVATOR**



**BACKHOE
LOADER**



**SKID STEER
LOADERS**



**COMPACT
EXCAVATORS**

	P27SH	P23SH	P16SH	P14SH	P12SH	P12SB	P6SB	P4SH	P3SH
Working Weight (kg)	1390	1000	690	590	290	390	235	135	90
Total Height (mm)	2750	2300	2100	1900	1475	1600	1350	1100	1018
Tool Diameter (mm)	120	114	95	90	80	80	64	54	46
Useful length of standard tool (mm)	522	494	446	408	295	280	340	300	260
Oil flow min (l/min)	110	100	90	70	40	40	30	25	15
Oil flow max (l/min)	140	135	130	100	100	100	45	30	20
Working pressure (bar)	110	110	100	90	80	80	90	100	120
Blows per minute min (c/min)	300	410	490	693	400	400	700	800	1000
Blows per minute max (c/min)	700	500	600	867	1000	1000	1100	1200	1500
Max Back pressure allowed into return line (bar)	4	4	4	4	4	4	4	4	4

Applications

Demolition & Recycling
Trenching
Road Construction & Maintenance
Foundation & Groundwork
Foundry Maintenance



**Best match
for P12 SH**



**BACKHOE
LOADER**

Hydraulic breakers / fully hydraulic line

SH

Choosing the right tool

Blunt

Suitable for work on concrete or breaking rocks of medium hardness



Chisel

Suitable for all excavation work or in restricted section excavation



Moil Point

Suitable for work on concrete or breaking rocks of medium hardness



Pile-driving

Suitable for pile works or supporting columns for guard rails, etc.



Wood cutting

Suitable to fell trees or cut large-sized stocks.

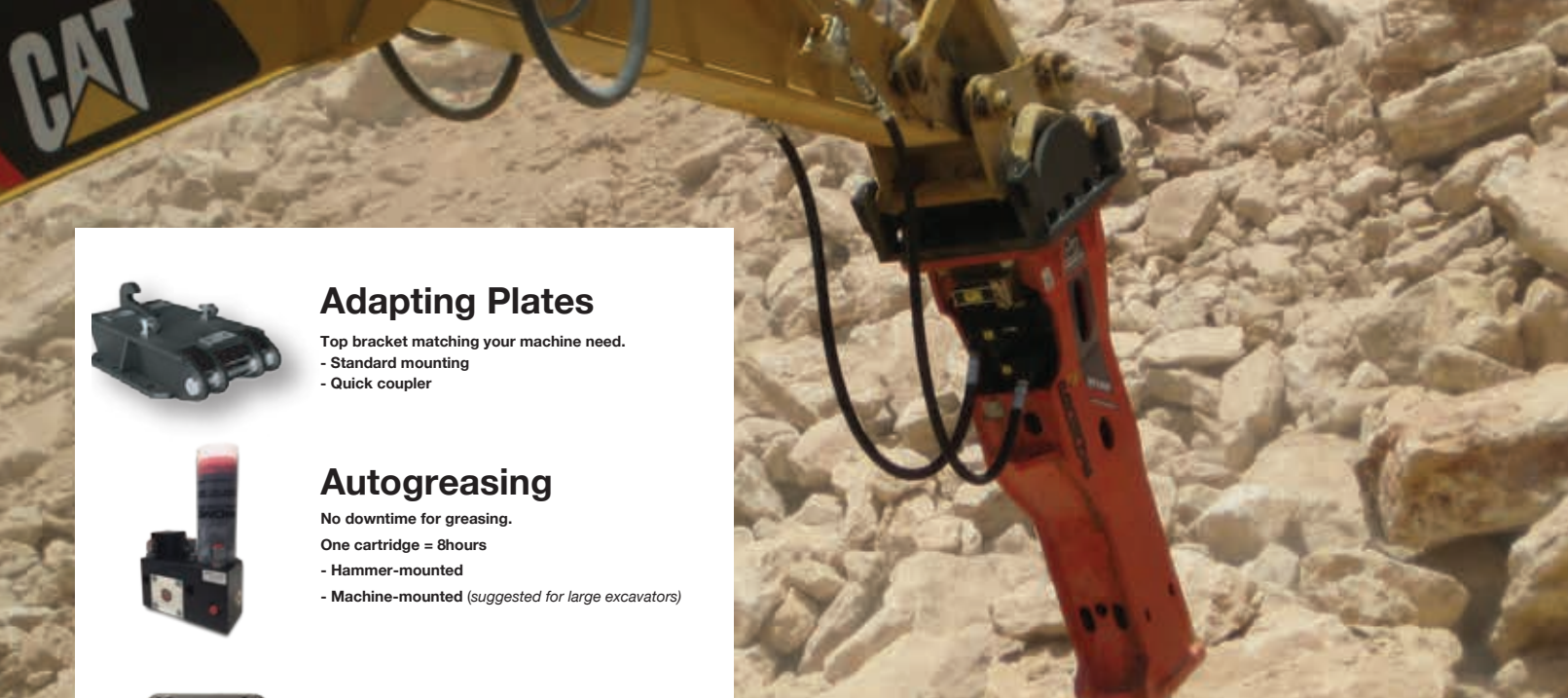


Asphalt Cutting

Suitable for asphalt cutting works, walls or tile (it can be parallel or transversal oriented, following the excavator's advancement direction).



Material	Type	Details	Tool
Asphalt	Road surfaces	Soft	Chisel
	All	Reinforced	Chisel
	All	No-reinforced	Moil point
Concrete	Recycling		Blunt tool
		Heavily fissured	Chisel
Light/Medium type rock (sedimentary) limestone, sandstone,	Trenching, foundation work, primary quarry breaking	Lightly fissured	Moil point
		Monolithic	Moil point
	Breaking over sizes		Blunt tool
Medium/Hard type rock (Crystalline) magma, granite, etc.	Trenching, foundation work, primary quarry breaking	Heavily fissured	Chisel
		Lightly fissured	Chisel
	Breaking over sizes	Monolithic	Chisel
			Blunt tool



Adapting Plates

- Top bracket matching your machine need.
- Standard mounting
 - Quick coupler



Autogreasing

- No downtime for greasing.
- One cartridge = 8hours
- Hammer-mounted
 - Machine-mounted *(suggested for large excavators)*



Hour-meter

- Ideal for:
- Rental activities
 - Maintenance operations

Options





Underwater

Need to work underwater?

We provide special kits for any application delivering the same performance and reliability.

Special Applications

High Temperature

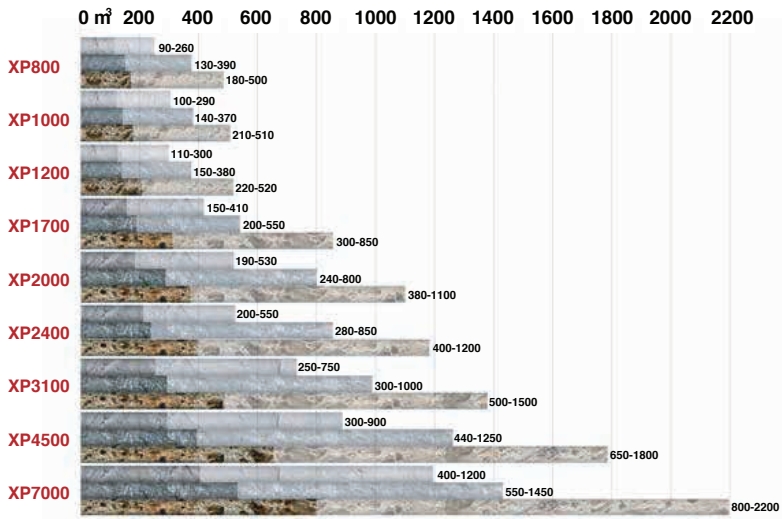
XP hammers can be equipped with specific seal kit, bushings and chisels designed to work in hot environments.



Tunneling

Promove provides a tunneling kit made of:

- Special harder bushing
- Closing pads for tool retainers
- Special steel and coating nylon bushings limiting dust from coming in and reducing tool/bushing space
- Extra air dust suppression kit delivering high pressure water spray directly at the bottom of the breaker.



Productivity

(m³ in 8 hours)



Hard Rock, Compact basalt, Limestone



Medium-hard rock, Slate, Non-omogeneous granite



Concrete non reinforced, Stratified limestone, Tuff

• Non-binding data; actual productivity is also affected by external factors like features and set-up of the carrier and driver's skill.

Special Applications





Made by Promove in Italy

Our hammers, the tools and all the spare parts are entirely designed, manufactured, built and assembled in our factories in Italy.



3 Years

Limited Warranty





PROMOVE s.r.l.

via Luigi Gambardella 10
70056 Molfetta, Bari - Italia
Tel +39.0803387054
Fax +39.0803387004
info@promove.it
www.promove.it



March 2017



ASSOCIATION OF
EQUIPMENT MANUFACTURERS



ISO 9001:2008
organizzazione certificata